

ASPLUND COLLECTION





BELLE coat rack in green khaki
BELLE shoe plate in green khaki

Swedish design meets the world of architecture

We have always been inspired and influenced by space and architecture, from all over the world. The architectural space and the human anatomy set the balance and proportions in a piece of furniture. When developing our products we imagine the pieces in various spaces and styles, contemporary or classic - from Stockholm to Antwerp, Melbourne or Paris. Together with photographer Louise Billgert we have created our interpretation of some of our favourite international architecture and interior moods.

Past – Present

LET NATURE IN

For us Swedes the forest is a part of our heritage, maybe that is why we are so attracted to the wooden architecture outside Melbourne on the other side of the world. Contemporary straight lines and solid materials of the houses that seem to be embedded in the organic shaped greenery. The architecture allows nature to come inside and makes a vague line between the interior and the exterior. Materials like concrete, wood, leather with features such as gigantic glass windows and expressive trees as the major characteristics.



ALLY hand tufted rug



VASS wall cabinet in black walnut oak veneer



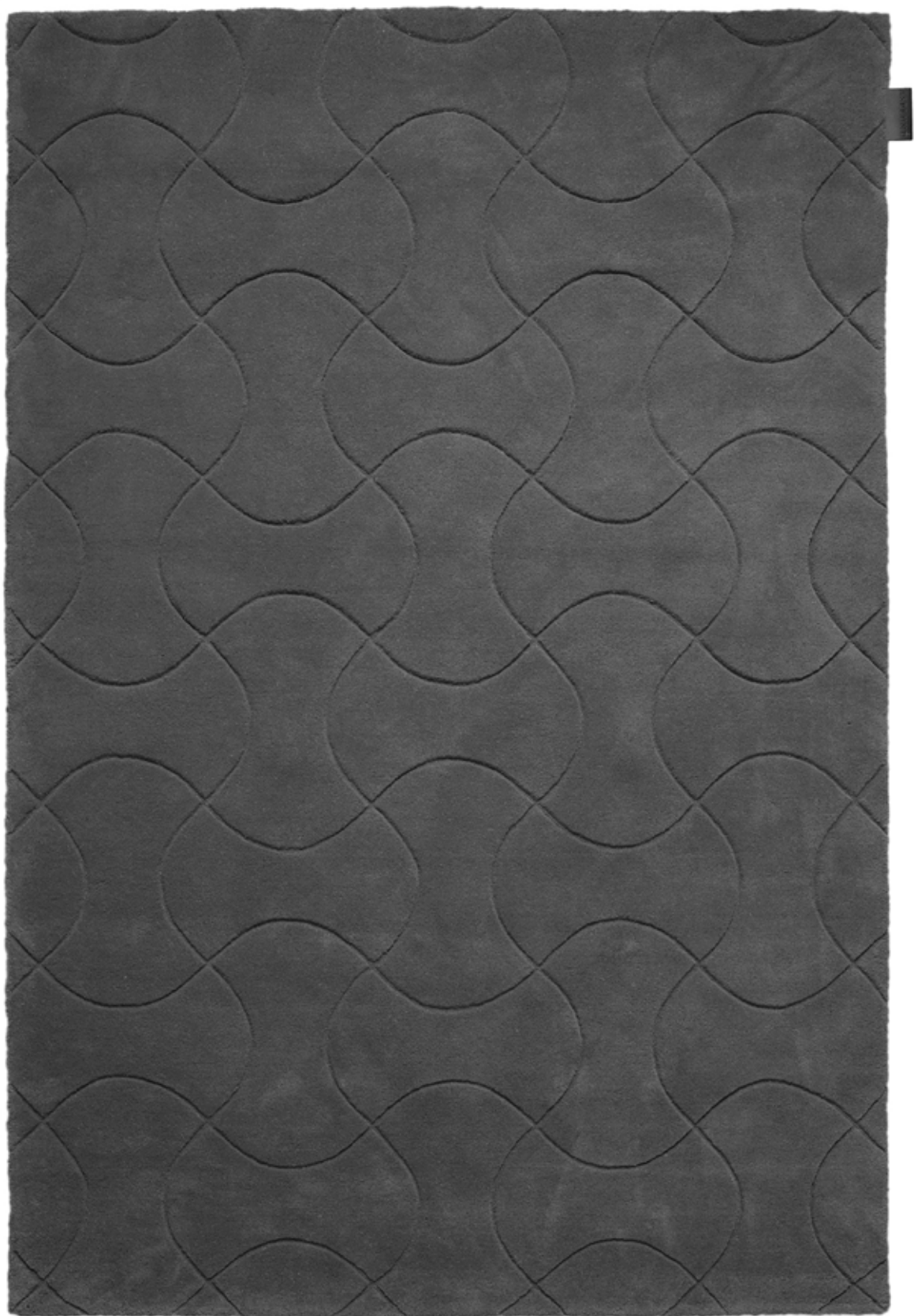


MOCI table in chesnut stained oak



SAHARA hand tufted rug in Tin





SAHARA hand tufted rug



AURORA hand tufted rug



PILE bed side table in natural stained oak
AURORA hand tufted rug
TATI mirror



LUC console in dark sand

OBLIQUE rectangular coffee table
EUCALYPTUS hand tufted rug 320x240 cm
PALAIS Royal dining table in teak stained oak
KILT Open 137 in black walnut oak veneer
KILT sideboard 137 in taupe with black walnut oak runners
PAGODA shelf 140:5 and 60:5 in nougat lacquered oak







ÎLE hand tufted rug



Grand PALAIS coffee table in teak stained oak



PALAIS Royal dining table in teak stained oak
PAGODA shelf 140:5 in nougat lacquered oak
PAGODA shelf 60:5 in nougat lacquered oak
WOOLSILK hand tufted rug in light beige





PAGODA shelf 140:5 and 60:5 in nougat lacquered oak
WOOLSILK hand tufted rug in light beige



SNOW A3 in dark sand



KILT Open 137 in black walnut oak veneer
KILT sideboard 137 in taupe with P4 runners
WOOLSILK hand tufted rug in light beige



Stockholm – Melbourne

LET NATURE IN

For us Swedes the forest is a part of our heritage, maybe that is why we are so attracted to the wooden architecture outside Melbourne on the other side of the world. Contemporary straight lines and solid materials of the houses that seem to be embedded in the organic shaped greenery. The architecture allows nature to come inside and makes a vague line between the interior and the exterior. Materials like concrete, wood, leather with features such as gigantic glass windows and expressive trees as the major characteristics.

OBLIQUE desk/sidetable
ÎLE L7 rug in lime





TATI coffee table 90 high and low in char grey
MR DOTTIE rug
LUC Deluxe 160 in dark sand with black walnut oak stand





LUC Deluxe in dark sand with black walnut oak stand
C CARPET knotted rug





TATI desk in char grey and dark smoked oak
NATI TATI drawer high in char grey and dark smoked oak
FISH hand knotted rug





TATI desk in char grey and dark smoked oak
FISH hand knotted rug



NATI TATI drawer high in char grey and dark smoked oak



SNOW G3 drawer in light grey
C CARPET hand knotted



PILE table in white stained oak
FISH hand tufted rug



NATI TATI drawer high in char grey and dark smoked oak
FISH hand knotted rug



NATI TATI console in white and carrara marble
STITCH hand woven carpet

PALAIS Royal dining table in white stained oak
FRAME 160 low cabinet and FRAME drawer low in taupe with cognac leather
WEDGE neutrals hand tufted rug

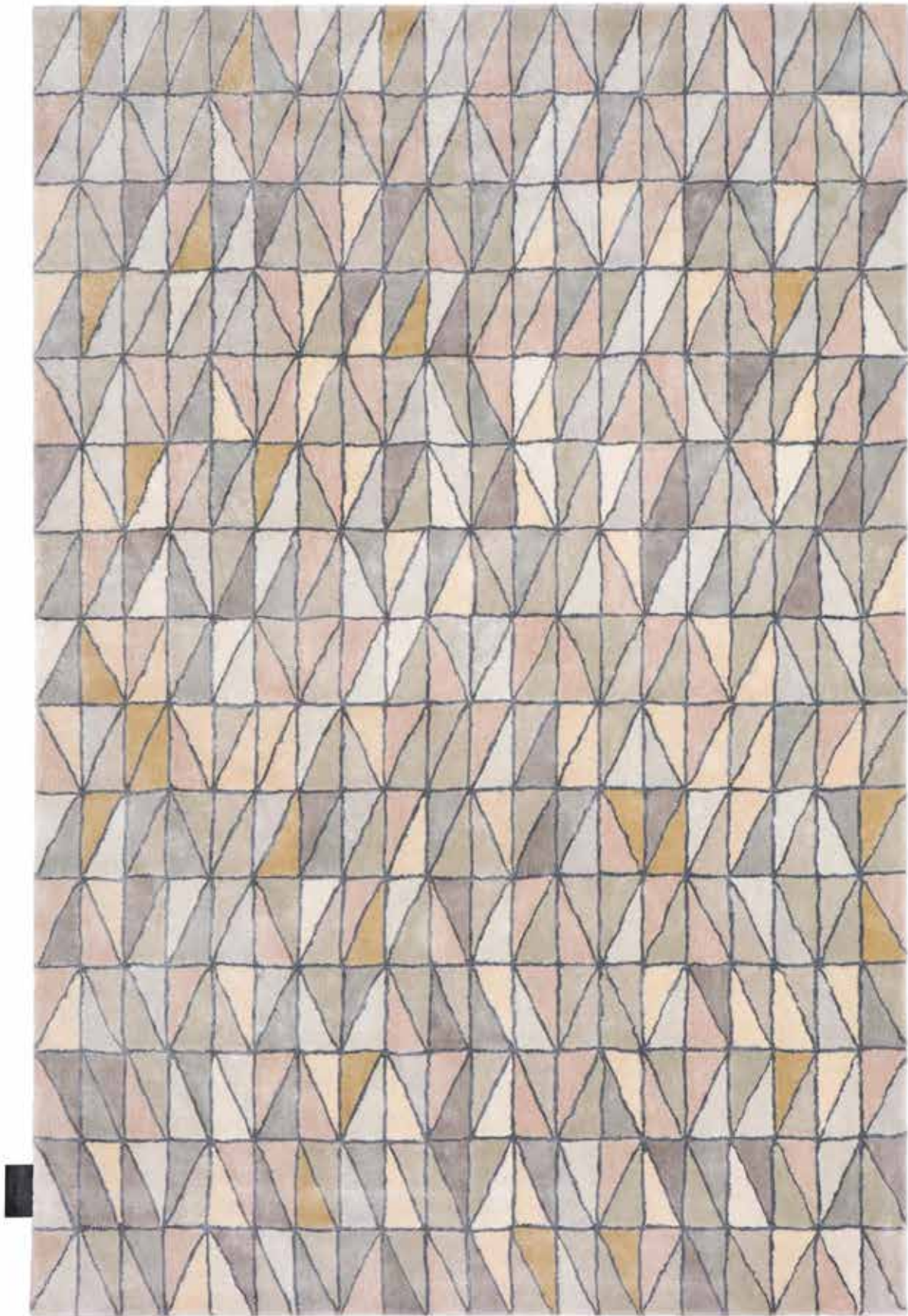








TATI console 120 in bronze
Grand PALAIS coffee table in white stained oak
BIBLIOTEKET hand knotted rug



WEDGE neutrals hand tufted rug



FRAME 160 low cabinet and FRAME drawer low in taupe with cognac leather
WEDGE neutrals hand tufted rug





PILE table in black walnut oak
TRACE hand tufted rug in forest

ASPLUND | CARPETS



Lotus
by Broberg & Ridderstråle



O
by Matz Borgström



Trace
by Ola Rune



Web
by Marie Louise-Hellgren



Miss Dottie
by Thomas Sandell



Wedge
by Marie-Louise Hellgren



Wedge
by Marie-Louise Hellgren



Bliss
by Nina Kullberg



Bend
by Nina Kullberg



Gradient
by Mattias Stenberg



Ally
by Tinka Luiga



Wedge 2
by Marie-Louise Hellgren



Fish
by Thomas Sandell



Convex
by Pia Wallén



Krickan
by Kristina Råström



Twice
by Jessica Signell Knutsson



JL
by Jonas Lindwall



Classic Minimum
by Studio ASPLUND



Air
by Thomas Sandell



Lines
by Alfredo Häbreli



Kilt
by Claeson Koivisto Rune



Maze
by Tom Dixon



Golden section
by Claeson Koivisto Rune



Fleur
by Broberg & Ridderstråle



Lapp
by Thomas Sandell



Fish
by Thomas Sandell



Pebbles
by Thomas Sandell



Rooftop
by Thomas Sandell



Flag
by Thomas Sandell



Crux
by Pia Wallén



île
by Piero Lissoni



île
by Piero Lissoni



Obi
by Färg & Blanche



Aurora
by Gabriel Tan



Horizon Fields
by Mattias Stenberg



Horizon Ice
by Mattias Stenberg



Horizon Frost
by Mattias Stenberg



Horizon Lake
by Mattias Stenberg



Horizon Midnight
by Mattias Stenberg



Mr Dottie
by Thomas Sandell



Carpet on carpet
by Jonas Bohlin



Eucalyptus
by Broberg & Ridderstråle



Rose
by Broberg & Ridderstråle



Wibes
by Staffan Holm



Sahara
by Sonja Larsson



Dot
by Pia Wallén



Woolsilk Plain
50% wool 50% Tencel



WOVEN



Star
by Emma Olbers



Stich
by Pia Wallén



Mini Flag
by Thomas Sandell



WOVEN
KNOTTED



C carpet
by Anya Septon &
Eva Lilja Löwenhielm



Maze
by Tom Dixon



Marc de Luxe
by Marc Newson



Biblioteket
by Emma Olbers



Platimun Tibetan



Gems relief
by Damian Willamson



Gems multi
by Damian Willamson

FURNITURE

More information to be found on our website
www.asplund.org



Belle coat rack
 by Broberg & Ridderstråle



Otto mirror
 by Anya Sebtion & Eva Lilja Löwenhielm



Kilt Light 90
 by Claesson Koivisto Rune



Kilt Open 180
 by Claesson Koivisto Rune



Kilt sideboard 137
 by Claesson Koivisto Rune



LUC console
 by Broberg & Ridderstråle



LUC
 by Broberg & Ridderstråle



LUC Deluxe
 by Broberg & Ridderstråle



Palais Royal
 by Broberg & Ridderstråle



Palais Ovale
 by Broberg & Ridderstråle



Grand Palais
 by Broberg & Ridderstråle



Petit Palais
 by Broberg & Ridderstråle



Tati console
 by Broberg & Ridderstråle



Tati coat rack
 by Broberg & Ridderstråle



Tati desk
 by Broberg & Ridderstråle



Tati dining table
 by Broberg & Ridderstråle



Oblique coffee table
by Claesson Koivisto Rune



Oblique desk/side table
by Claesson Koivisto Rune



Moci table
by Moa Sjöberg



Pagoda 140:5
by Broberg & Ridderstråle



Chamfer lounge shelf
by Mattias Stenberg



Chamfer coffee table
by Mattias Stenberg



Pile
by Jessica Signell Knutsson



Frame series
by Anya Sebtion & Eva Lilja Löwenhielm



Frame cabinet
by Anya Sebtion & Eva Lilja Löwenhielm



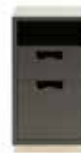
Frame XL
by Anya Sebtion & Eva Lilja Löwenhielm



Snow
by Thomas Sandell & Jonas Bohlin



Snow glass cabinet
by Thomas Sandell & Jonas Bohlin



Snow night table
by Thomas Sandell & Jonas Bohlin



Remy trolley
by Broberg & Ridderstråle



Tati mirror
by Broberg & Ridderstråle



Tati coffee table
by Broberg & Ridderstråle



Vass cabinet
by Claesson Koivisto Rune



Vass desk
by Claesson Koivisto Rune



ASPLUND

Sibyllegatan 31, 114 42 Stockholm | @asplundcollection | info@asplund.org | www.asplund.org